



Timber Cove

HARRIS COUNTY'S FINEST LAKESIDE SUBDIVISION



Timber Cove will be the delight
of your whole family the whole year 'round...
a place to live and relax just a few minutes
drive from Greater Houston.



A highly restricted and developed community
having the advantages of quiet and seclusion
but with beautiful living-vacation sites and all the
recreation activity you desire.

HERE
YOU WILL FIND
A SPACIOUS AND
BEAUTIFUL HOMESITE
DESIGNED FOR
THE PERFECT HOME
YOU HAVE
BEEN PLANNING

TIMBER COVE has
several thousand feet of
frontage on Taylor Lake,
which has hundreds of acres
of water and is
several miles long —
ideal for full enjoyment
of every water sport.

with these important advantages

- Exclusively Restricted
- Permanent Maintenance Fund
- Asphalt Streets (Built to County Specifications and County Maintained)
- All Utilities
- Perfect Drainage
- Beautiful Trees — Both Pine and Hardwoods
- Waterfront Lots Amazingly Landscaped by Nature
- Large Lots Insuring Privacy
- No City Taxes
- Good Schools

plus these added features

- All lots have access to the Lake through Parks and boat launching facilities are available for exclusive use of residents.
- From Timber Cove you can travel by boat into the Bay or Gulf.
- Permanent boat storage facilities available a short distance away in Clear Lake
- Park and playground areas permanently maintained
- Ready accessibility to main highways and freeways to Houston, Pasadena, Baytown, Texas City, Galveston, etc.
- Private airport facilities available 10 minutes from the sub-division

and of great importance

- Lots are within price range of all
- Convenient terms are available, and 5% discount allowed for cash payment

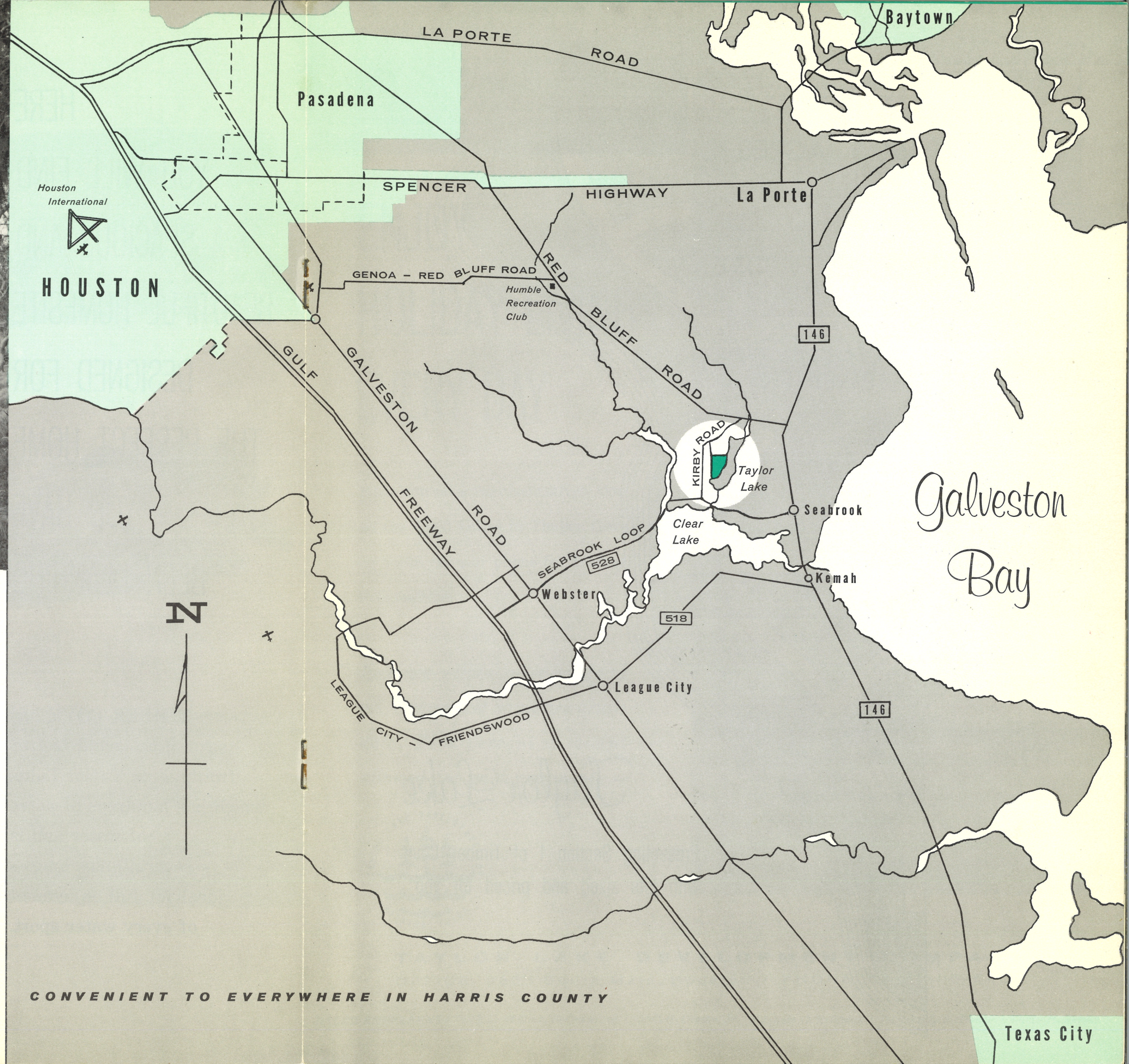
Timber Cove



Timber Cove is only...

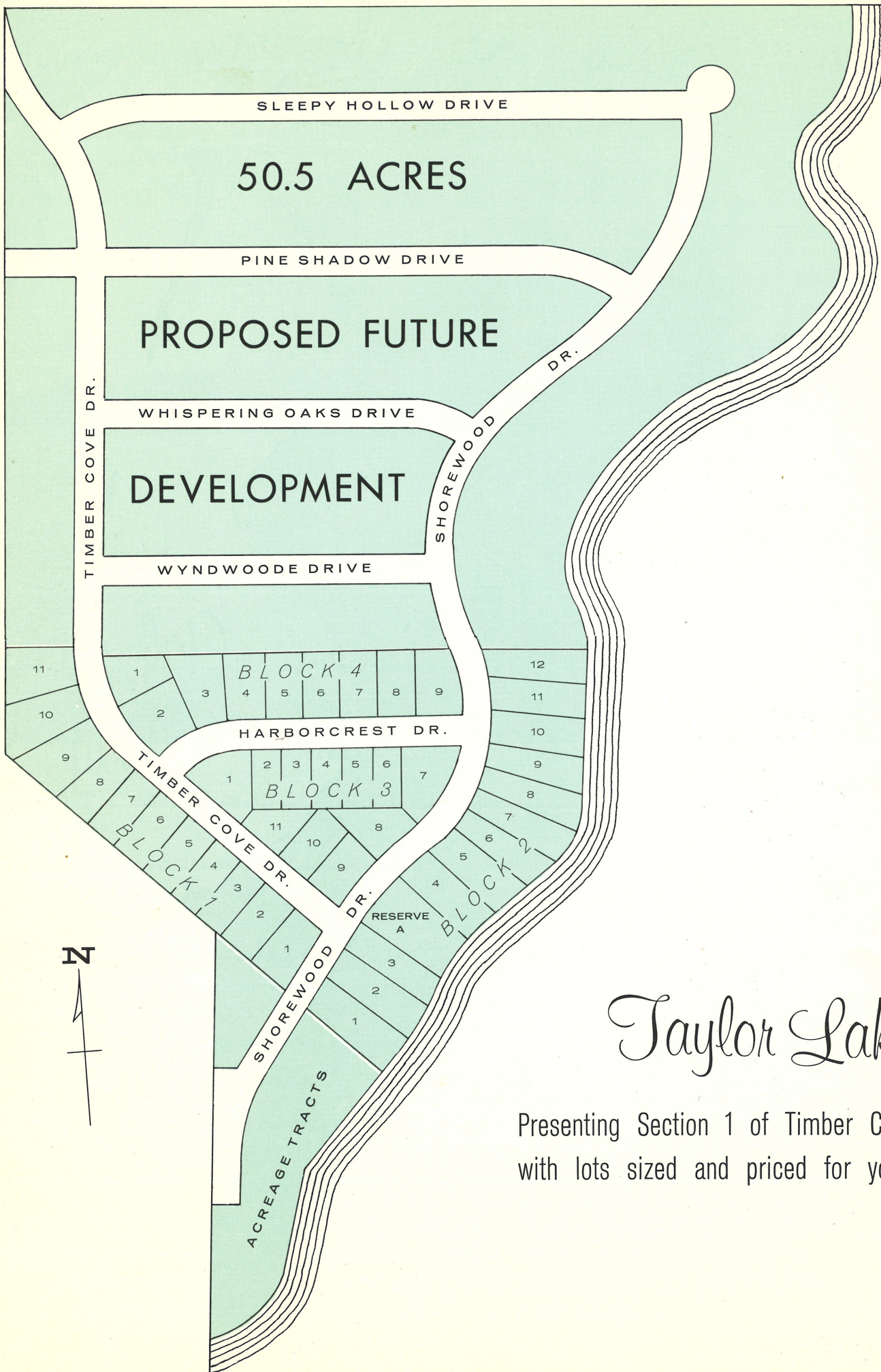
26 Miles	Downtown Houston	30 Minutes
13 Miles	Pasadena	15 Minutes
17 Miles	Baytown	20 Minutes
18 Miles	Texas City-La Marque	20 Minutes
33 Miles	Galveston	35 Minutes
15 Miles	Channel Industries	18 Minutes
18 Miles	Houston Airport	20 Minutes
20 Miles	Gulfgate Shopping Center	22 Minutes
2-5 Miles	Yacht Clubs — Clear Lake	7 Minutes
4 Miles	Humble Oil Country Club	6 Minutes
(Adjoining)	Champion Recreation Park	3 Minutes
	Bay (by boat)	20 Minutes

Timber Cove



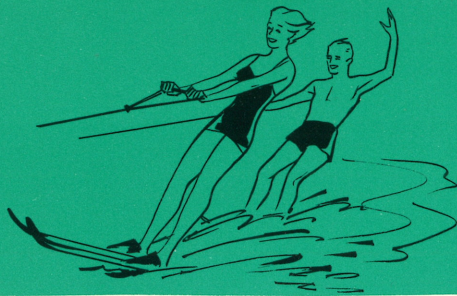
CONVENIENT TO EVERYWHERE IN HARRIS COUNTY

Texas City



Taylor Lake

Presenting Section 1 of Timber Cove
with lots sized and priced for you



ENJOY HOLIDAY LIVING EVERY DAY

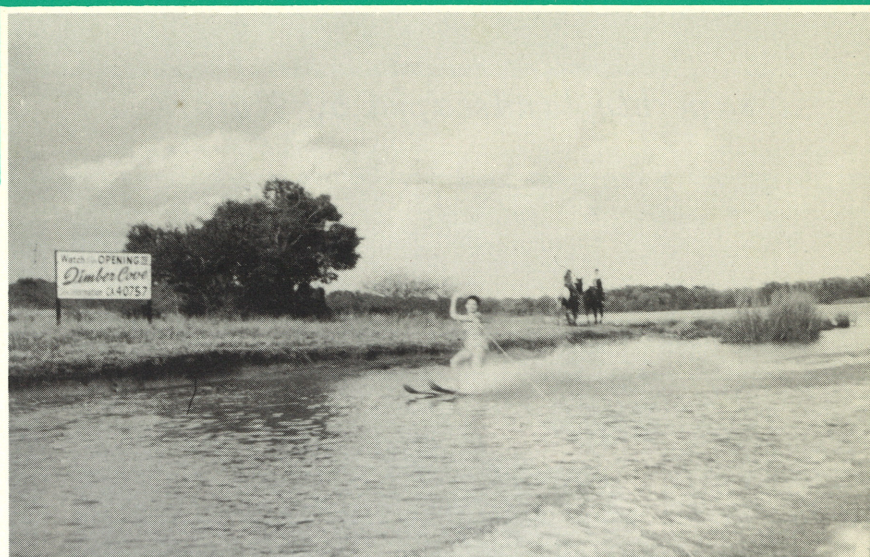
Visit our sales representatives soon
at the Field Office in Timber Cove
or write, wire or phone for further
information.

*Lots are within price range of
all. Convenient terms are avail-
able. Five percent discount
allowed for cash payment.*



TAYLOR LAKE DEVELOPMENT COMPANY

OFFICE: 2635 South Main, Houston • PHONE: CApitol 5-5401



SALES REPRESENTATIVES: William S. Crawford • Cecil H. Creson, Jr. • Johnie G. Freeman • Herman L. McDaniel • Larry H. Robinson

superbly landscaped by Nature . . .



. . . for year 'round holiday living

Timber Cove

HARRIS COUNTY'S
FINEST LAKESIDE
SUBDIVISION