

CLEAR LAKE AREA - AN IDEAL PLACE TO LIVE

1964



HOMES

Every possible need can be met in the selection of homes in the Clear Lake area. Homes in just about any price range may be secured in one of the many new housing developments. Homes range from modest low income houses to palatial residences in the exclusive developments of the area.

League City, Nassau Bay, Timber Cove, El Lago, Bayou Brae, Clear Lake City, Highland Terrace, Miramar, Seascape, Webdale, Swan Lagoon, and El Cary are some of the residential developments where medium to upper bracket homes may be secured.

Long before the inception of Manned Spacecraft Center in the Clear Lake area, there was a movement of home seekers into the Clear Lake perimeter. The movement was a slow, but progressive one which gave birth to many housing developments.

The area was developing as a residential and recreational mecca and the impact of Manned Spacecraft Center only speeded its development rather than started it.

Recreation is one of the greatest industries of the Clear Lake area. Fishing, boating, skiing, swimming, picnicking, and other activities prevail.

Water skiing is one of the most popular of the water sports with both Clear Lake and its many tributaries furnishing ideal water conditions for the skiers.

Residential developments in Clear Lake area are fantastic. There is a development to suit every economic level. The artist's design throughout most of the developments have been varied sufficiently to make the structures particularly beautiful.

CHURCHES

Approximately 30 churches are located in the various Clear Lake communities. Many of the churches in the area have had roots in the communities for years; while many others have been organized since the influx of new residents following the Manned Spacecraft Center chapter of Clear Lake area history.

Several new churches have been announced, and many others have announced new building programs.



MEDICAL FACILITIES

Medical facilities in the Clear Lake area are abundant. Opening of several new medical offices and clinics in the area during the past year has more than compensated for the needs of the increased population of the area.

While there are no major hospitals in the immediate area, several medium and large hospitals are available within a few miles of the area. Plans are under study for a hospital in the Clear Lake area and the construction of such a facility during the coming months is most likely.

Dentists, too, are abundant in the Clear Lake area.



RECREATION

One of the greatest economic contributions to the Clear Lake area is being made by the rapidly developing boating industry. For a long time, Clear Lake has been a point of high interest for boating enthusiasts. Both fishing and pleasure craft have used Clear Lake and its various tributaries for many years.

During the more recent years, Clear Lake has become a mecca for yachts, cruisers and runabouts, to say nothing of the many types of outboards and sailing craft.

Large sales and service organizations which handle all sizes of craft have come into existence, while related sports and boating equipment firms are also making an excellent showing in the area economic pattern.

Being advertised as the "Boating Center of the South", the area is rapidly becoming just that.

SCHOOLS

The entire Clear Lake area is served by a single school district—Clear Creek Independent School District. This school district is the result of the consolidation of four earlier districts—Kemah, League City, Webster and Seabrook.

Clear Creek School District has become one of the finest in the state, and some of the innovations in both elementary and high school education have been adopted by institutions throughout the state.

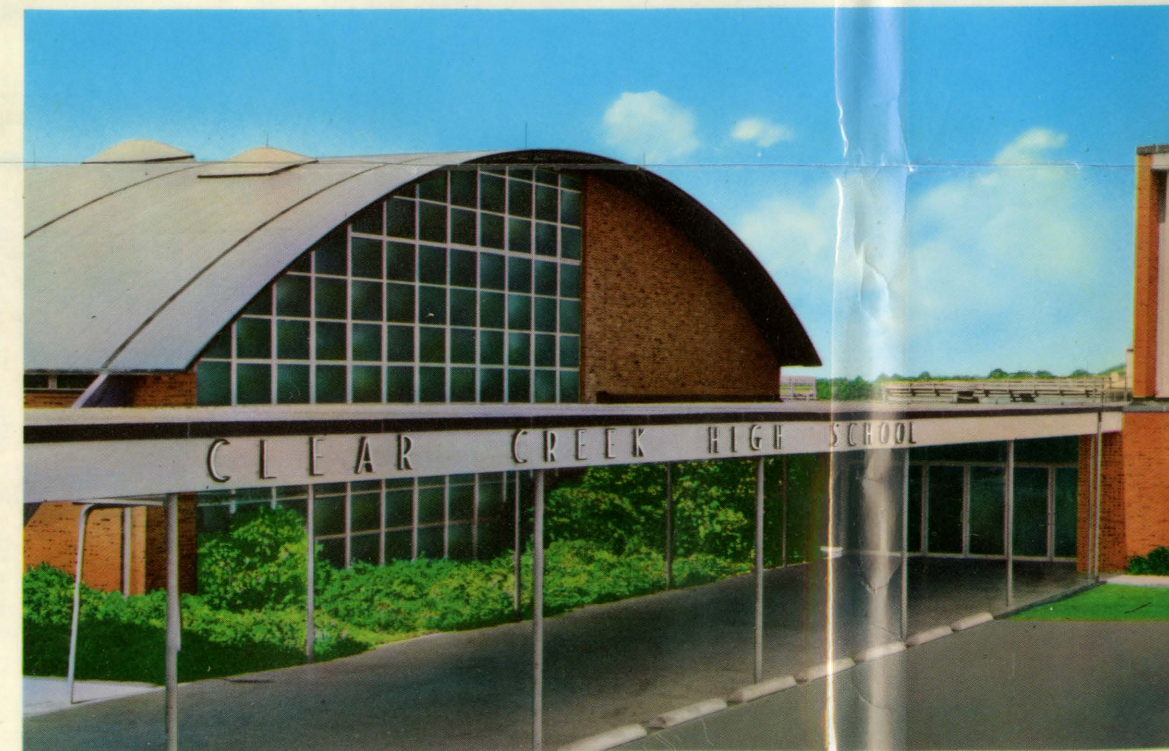
The district consists of a high school at League City, junior high school at Webster, and elementary schools at Clear Lake City, League City, Webster, Seabrook and Kemah. The population explosion during the coming years will bring about additional high school and junior high facilities in other areas of the district, as well as added elementary facilities.

The present school bus system is one of the most complete in any school district, with the routings so complete, even in spite of one of the largest districts in area in the state, that few pupils need walk more than a very few blocks.

Enrollment at Clear Creek School District September 25, 1964 has moved to more than 4,000 pupils, and a steady increase is expected. A limited building program is holding pace with the growth of school population in order that the quality of curriculum need not be sacrificed.



ABOVE IS THE artist's conception of the Nassau Bay Shoppes at the huge Nassau Bay Development. This is the first building of the community shopping center on a 2 1/2-acre tract and will be part of a 22-acre shopping center. Many firms are already open for business.



Every ingredient needed by industry is found in the Clear Lake area.

Many small industries have long since been established in the Clear Lake area, and the interest in the area by all types of industry is increasing by the day.

The new Humble Bayport project is designed to draw many new industries to that area.

A total of 115 space-oriented companies presently have some sort of office location associated with Manned Spacecraft Center.

General Electric has already taken over an entire building at Nassau Bay; Lockheed and Lockheed Aircraft have two separate sites in Clear Lake City; while McDonnell Aircraft has opened space in an office building in Nassau Bay.

Industries, particularly those connected with the Manned Spacecraft Center activities are flocking into the Clear Lake area.

a considerable addition has been made to the original program. The buildings above are all completed and many more are in various stages of completion.

MANNED SPACECRAFT CENTER NATIONAL AND SPACE ADMINISTRATION CENTER at Clear Lake, above is an artist's conception of the great Manned Spacecraft Center. However, Lockheed Aircraft have two separate sites in Clear Lake City; while McDonnell Aircraft has opened space in an office building in Nassau Bay.



When the 1,620 acre site at Clear Lake was chosen for the Manned Spacecraft Center in September 1961, a new era was born. A new pump for the area economy was put into motion. Both direct and indirect results to the area economy have been felt since construction began in April 1962. The total impact cannot be measured. However, merchants from the surrounding areas, including the Clear Lake communities, have received more than \$12 million in direct orders from Manned Spacecraft Center for supplies, equipment and services. The majority of these orders went to established small businesses of the area and to the local branches of national concerns.

A total of 115 space oriented companies have established marketing, service and liaison offices in the area, many have located within the perimeter of the Clear Lake area. Such names as Philco, General Electric, Lockheed, and McDonnell Aircraft are among those establishing larger facilities in the immediate area.

Hundreds of area personnel have obtained employment at the Manned Spacecraft facilities.

Hundreds of new families have moved into the Clear Lake area and boosted the economy through the purchase of new homes, services, goods of all kinds.

Manned Spacecraft Center, at present approximately 90 per cent complete, has already cost more than \$140 million and is expected to reach the \$165 million mark by the time it reaches completion. The impact of this expenditure, both directly and indirectly, is tremendous.

The average basic salary for all employees is \$8,079.00 and at present more than 3,800 persons are employed at Manned Spacecraft Center at Clear Lake, and more than 4,500 are expected by the end of 1964. This means an annual payroll of \$30,000,000 is pouring into the area for the purchase of homes, food, medical expenses, automobiles, appliances.

With the payrolls of the construction and industrial support contractors being poured into the surrounding area, millions of dollars per month are being directed into the Clear Lake area itself.

Manned Spacecraft Center itself has established an image of national recognition to the Clear Lake area.

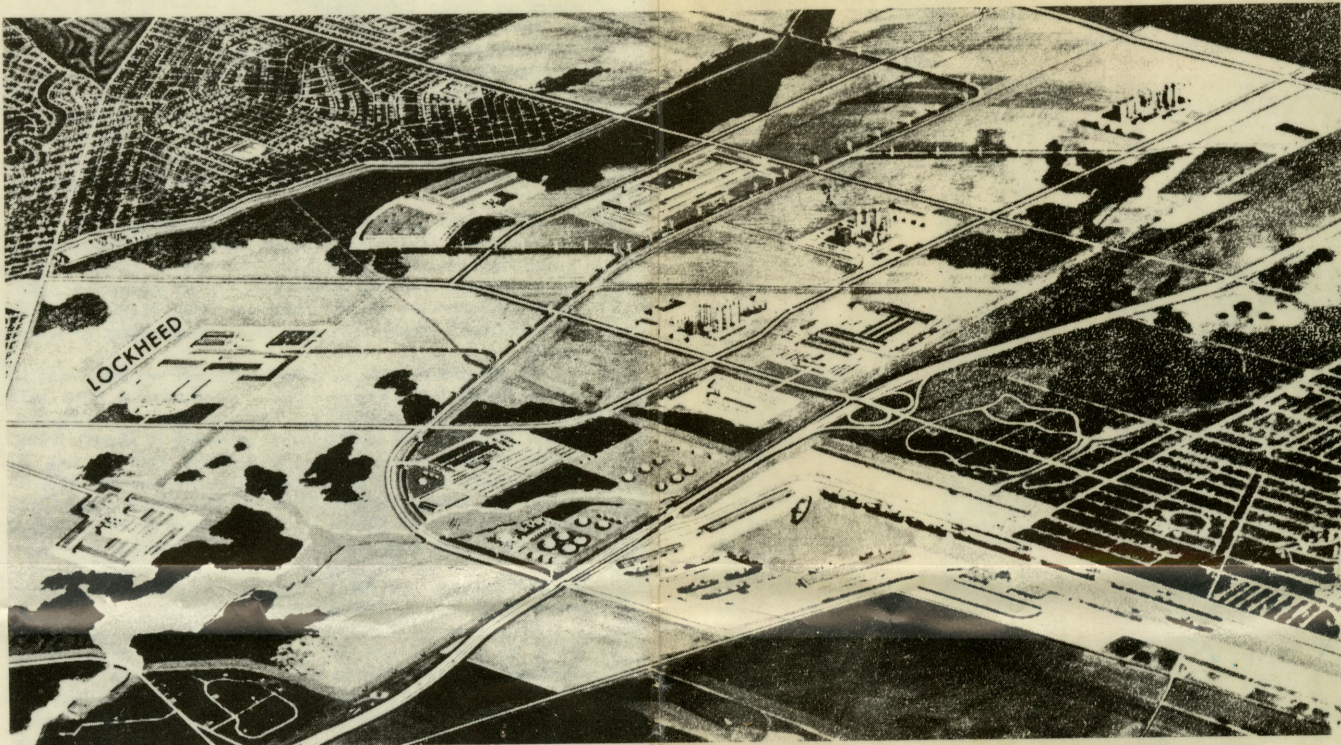
It is headquarters for the nation's astronauts, and in general the entire pattern of operation has one distinct goal: "To send man exploring beyond his home planet and bring him back safely."

WHERE HISTORY IS MADE

CLEAR LAKE AND ITS COMMUNITIES

The Clear Lake area includes communities around the perimeter of Clear Lake itself. Starting at the junction of the Gulf Freeway and Hwy. 528, the city of Webster is the first community in the area. Then the new Clear Lake City, Humble-Del Webb Venture, on the left, and adjoining the Manned Spacecraft Center site; while directly across Hwy. 528, and facing the Manned Spacecraft Center, is Nassau Bay, a fast growing commercial and residential area. Then continuing eastward along Hwy. 528 are such residential areas as Swan Lagoon, El Cary, Taylor Lake Village, El Lago, Seabrook, including such communities as Seascape, Miramar, and others. Then, turning right at Seabrook on Hwy. 146, across the

newly completed high bridge across the channel leading from Clear Lake into Galveston Bay, to Kemah. Thence to the right on Hwy. 518 through Clear Lake Shores, Lazy Bend, Glen Cove, Lakeside, and in League City, such developments as Bayou Brae, Meadowicke, Highland Terrace, Sun Valley, and Newport, the scene of the 1964 Parade of Homes. Besides these areas directly affixed to Clear Lake, such communities as Friendswood on the west, Dickinson to the south, Shore Acres and La Porte on the north, and other fringe communities play a part in the general economic and residential picture of the Clear Lake area.

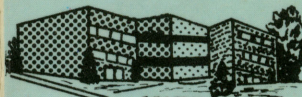


BAYPORT—MULTI-MILLION DOLLAR industrial complex now under construction by Humble Oil and Refining Company, this huge project involves a channel into the area which will provide direct shipping from the Clear Lake area. Two firms have already purchased sites in the area. Construction on the channel and facilities is expected to start in September.

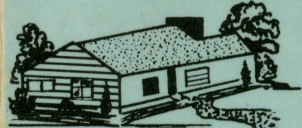
Fabulous....

CLEAR LAKE AREA

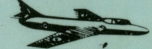
GATEWAY TO THE BAY



EXCELLENT SCHOOLS



RESIDENTIAL MECCA



TRANSPORTATION HUB



SPORTSMAN'S PARADISE



INDUSTRIAL POTENTIAL



MANNED SPACECRAFT CENTER

BOATING & RECREATION CENTER

FOR ADDITIONAL INFORMATION CONTACT
CLEAR LAKE CHAMBER OF COMMERCE
BOX 476, SEABROOK, TEXAS

FOR ADDITIONAL INFORMATION CONTACT
CLEAR LAKE CHAMBER OF COMMERCE
BOX 476, SEABROOK, TEXAS

BOATING & RECREATION CENTER

MANNED SPACECRAFT CENTER

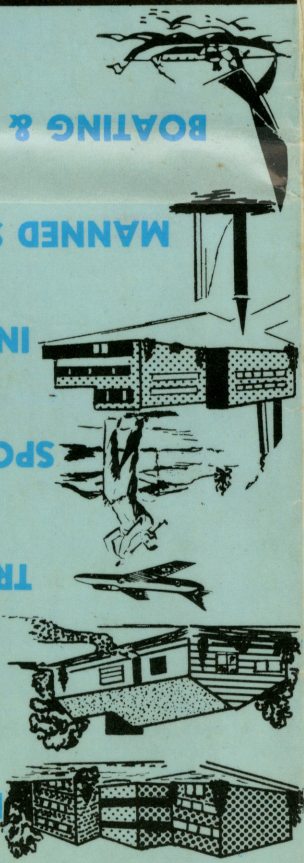
INDUSTRIAL POTENTIAL

SPORTSMAN'S PARADISE

TRANSPORTATION HUB

RESIDENTIAL MECCA

EXCELLENT SCHOOLS

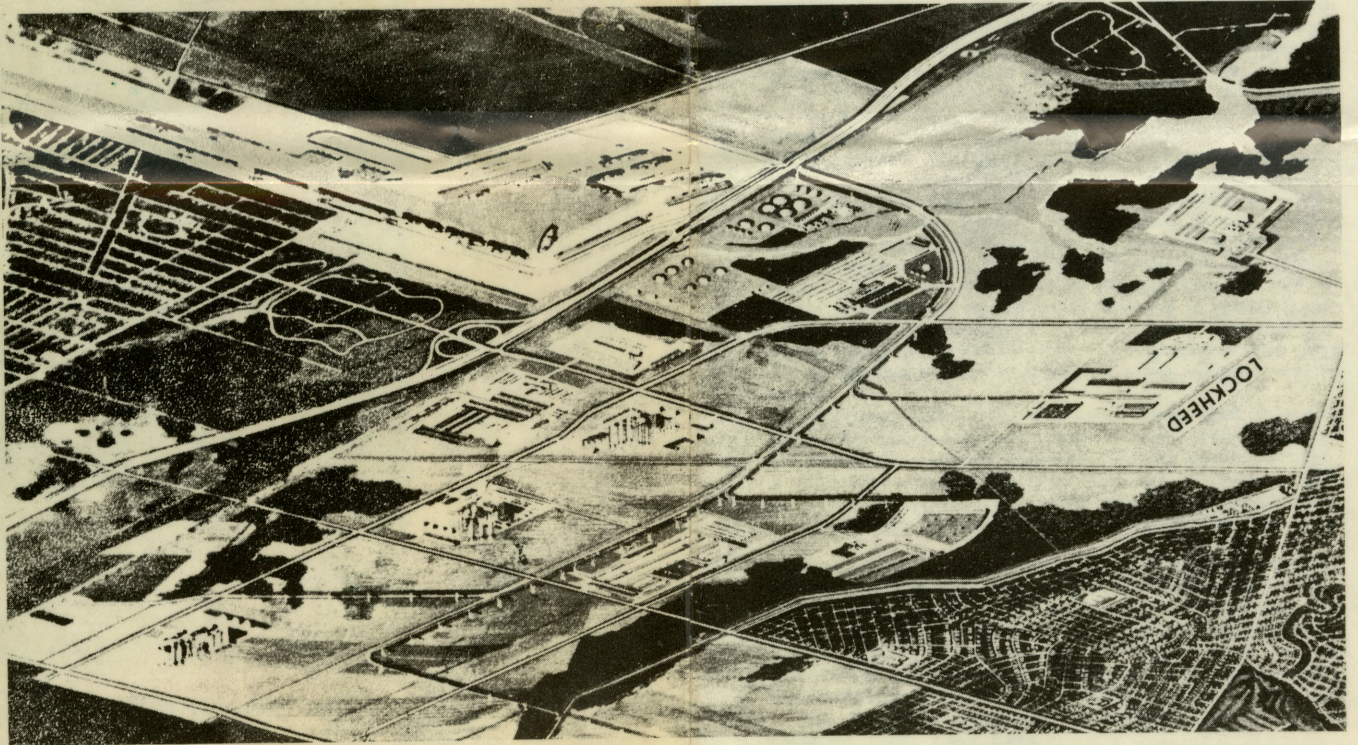


GATEWAY TO THE BAY

CLEAR LAKE AREA

Tabulous...

BAYPORT—MULTI-MILLION DOLLAR industrial complex now under construction by Humble Oil and Refining Company, this huge project involves a channel into the area which will provide direct shipping from the Clear Lake area. Two firms have already purchased sites in the area. Construction on the channel and facilities is expected to start in September.



The Clear Lake area includes communities around the perimeter of Clear Lake itself. Starting at the junction of the Gulf Freeway and Hwy. 528, the city of Webster is the first community in the area. Then the new Clear Lake City, Humble-Del Webb Venture, on the left, and adjoining the Manned Spacecraft Center site; while directly across Hwy. 528, and facing the Manned Spacecraft Center, is Nassau Bay, a fast growing commercial and residential area. Then continuing eastward along Hwy. 528 are such residential areas as Swan Lagoon, El Cary, Taylor Lake Village, El Lago, Seabrook, including such communities as Seascape, Miramar, and others. Then, turning right at Seabrook on Hwy. 146, across the Lake area.

newly completed high bridge across the channel leading from Clear Lake into Galveston Bay, to Kemah. Thence to the right on Hwy. 518 through Clear Lake Shores, Lazy Bend, Glen Cove, Lakeside, and in League City, such developments as Bayou Brae, Meadowcreek, High and Terrace, Sun Valley, and Newport, the scene of the 1964 Parade of Homes. Besides these areas directly affixed to Clear Lake, such communities as Friendswood on the west, Dickinson to the south, Shore Acres and La Porte on the north, and other fringe communities play a part in the general economic and residential picture of the Clear Lake area.

CLEAR LAKE AND ITS COMMUNITIES

WHERE HISTORY IS MADE

When the 1,620 acre site at Clear Lake was chosen for the Manned Spacecraft Center in September 1961, a new era was born. A new pump for the area economy was put into motion. Both direct and indirect results to the area economy have been felt since construction began in April 1962. The total impact cannot be measured. However, merchants from the surrounding areas, including the Clear Lake communities, have received more than \$12 million in direct orders from Manned Spacecraft Center for supplies, equipment and services. The majority of these orders went to established small businesses of the area and to the local branches of national concerns.

A total of 115 space oriented companies have established marketing, service and liaison offices in the area, many have located within the perimeter of the Clear Lake area. Such names as Philco, General Electric, Lockheed, and McDonnell Aircraft are among those establishing larger facilities in the immediate area.

Hundreds of area personnel have obtained employment at the Manned Spacecraft facilities.

Hundreds of new families have moved into the Clear Lake area and boosted the economy through the purchase of new homes, services, goods of all kinds.

Manned Spacecraft Center, at present approximately 90 per cent complete, has already cost more than \$140 million and is expected to reach the \$165 million mark by the time it reaches completion. The impact of this expenditure, both directly and indirectly, is tremendous.

The average basic salary for all employees is \$8,079.00 and at present more than 3,800 persons are employed at Manned Spacecraft Center at Clear Lake, and more than 4,500 are expected by the end of 1964. This means an annual payroll of \$30,000,000 is pouring into the area for the purchase of homes, food, medical expenses, automobiles, appliances.

With the payrolls of the construction and industrial support contractors being poured into the surrounding area, millions of dollars per month are being directed into the Clear Lake area itself.

Manned Spacecraft Center itself has established an image of national recognition to the Clear Lake area.

It is headquarters for the nation's astronauts, and in general the entire pattern of operation has one distinct goal: "To send man exploring beyond his home planet and bring him back safely."



MANNED SPACECRAFT CENTER NATIONAL AND SPACE ADMINISTRATION CENTER at Clear Lake, above is an artist's conception of the great Manned Spacecraft Center. However, a considerable addition has been made to the original program. The buildings above are all completed and many more are in various stages of completion.

Industries, particularly those connected with the Manned Spacecraft Center activities are flocking into the Clear Lake area.

General Electric has already taken over an entire building at Nassau Bay; Lockheed and Lockheed Aircraft have two separate sites in Clear Lake City; while McDonnell Aircraft has opened space in an office building in Nassau Bay.

A total of 115 space-oriented companies presently have some sort of office location associated with Manned Spacecraft Center.

The new Humble Bayport project is designed to draw many new industries to that area.

Many small industries have long since been established in the Clear Lake area, and the interest in the area by all types of industry is increasing by the day.

Every ingredient needed by industry is found in the Clear Lake area.