



### Brush Painted Ware

Brush Painted Ware was moderately expensive and was available as early as the 1830s, but most popular from 1840 through the 1860s. The earlier designs were painted on the vessel by hand in a single color under the glaze; but later designs included flowers, animals, scenes and buildings in multiple colors, still hand-painted.

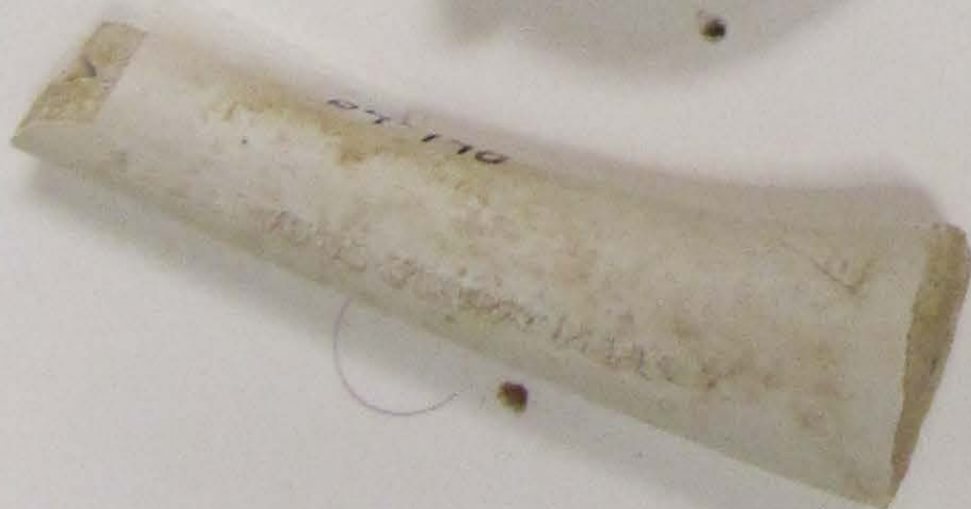
### Decalcomania

Decal decorated ceramics began its popularity ca. 1885 and the style prevailed through the 1950s. The earliest decal decorated dishes had simple one-color outline designs, often filled in with enamel over the glaze, such as these.



### Tobacco Pipes

Nineteenth century tobacco pipes were used widely by both men and women and were shipped by the barrelful to America. Some were plain and cheap, designed merely for pleasure. Others were fanciful with effigies of famous figures or fictional characters. Some even served as political campaign memorabilia. Occasionally pipes were personalized for their owner; more often they were marked by their proud manufacturer.



### Toys

Clay was used to produce items other than tableware and kitchenware. Toys such as this porcelain toy dish and this earthenware marble figured largely in the lives 19th century children.

